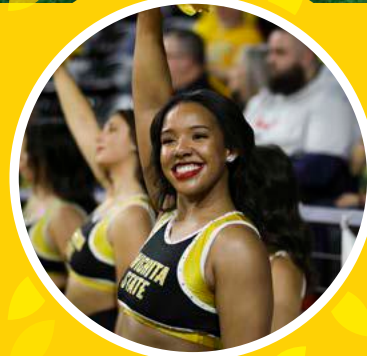


WICHITA STATE UNIVERSITY

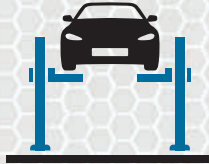
VISITOR GUIDE

2023-2024



MYERS AUTOMOTIVE

EXPERT • TRUSTWORTHY • AUTO REPAIR
GUARANTEED



With four convenient locations

East Wichita
2100 N Beaumont

West Wichita
7585 W 21st St N

Derby
100 S Baltimore

Andover
936 N Andover Rd

316-768-7000 | MyersAutoKS.com

Always up to something good.

FAVORITE SPOTS, LOCAL SHOPS AND A
ONE-OF-A-KIND WICHITA EXPERIENCE.

SEPHORA

NORDSTROM RACK

LULULEMON

TRADER JOE'S

BAKESALE TREAT PARLOR



@BRADLEYFAIRWICHITA | BRADLEYFAIR.COM

2000 N. ROCK RD, WICHITA, KS

BRADLEY
FAIR



ABOUT WICHITA STATE

As current students at Wichita State University, **we'd like to show you why we love Shocker Nation.**

Outside of class, we've been involved in student organizations, secured internships, studied in residence at other universities both in the United States and abroad, and cheered on our teams in Charles Koch Arena. **There's always something happening on campus**, the heart of Shocker Nation. For example, we've recently opened the new Steve Clark YMCA and Student Wellness Center, which houses 77,000 square feet of space for students to exercise and have their physical and mental health served by professional staff. Additionally, the \$60 million business school home, Woolsey Hall, opened in summer 2022, and a new \$17 million Shocker Success Center is under construction this year.

Of course, **the Wichita State community extends beyond campus.** Partnerships within Wichita provide students with the opportunity to complete research and gain professional experience with employers like Airbus, Koch Industries, NetApp, Textron Aviation and Wichita Public Schools. And, Wichita State's Old Town location – in the center of Wichita – allows students to be in the middle of a bustling business and entertainment district.

Take some time to explore the guide and see all the opportunities Wichita State offers. You can also **follow @shockerexp on X/Twitter and Instagram** to see the campus from the eyes of our students throughout the entire year. We hope you see why we are all proud to be called **SHOCKERS!**

In Shocker Spirit,
Student Ambassador Society

CONTENTS

- 3-7** About Wichita State
- 8-12** Academics
- 13-15** Student Life
- 16-17** Campus Map
- 18-19** Athletics
- 21** Housing & Campus Rec
- 22-23** Beyond the Classroom
- 24-25** Innovation Campus
- 26** Campus Resources
- 28** Wichita State Fun Facts
- 30** Let's Connect

The Wichita State University Visitor Guide is produced by the Wichita State Office of Admissions, 1845 Fairmount, Wichita, KS 67260, (316) 978-3085, and published by Momentous Campus Media, 5500 Flatiron Pkwy, #105, Boulder, CO 80301, (303) 544-1198. Copyright 2023. All rights reserved. Material contained herein may not be reproduced without written consent from Wichita State University and Momentous Campus Media. This publication is printed using a renewable ink resource on 10% recycled paper that is Elemental Chlorine Free. It was produced by a certified member of the Forest Stewardship Council (FSC) and Sustainable Forestry Initiative (SFI) compliant with the Federal Resource Conservation Recovery Act (RCRA).

NOTICE OF NONDISCRIMINATION | Wichita State University does not discriminate in its employment practices, educational programs or activities on the basis of age (40 years or older), ancestry, color, disability, gender, gender expression, gender identity, genetic information, marital status, national origin, political affiliation, pregnancy, race, religion, sex, sexual orientation, or status as a veteran. Retaliation against an individual filing or cooperating in a complaint process is also prohibited. Sexual misconduct, relationship violence and stalking are forms of sex discrimination and are prohibited under Title IX of the Education Amendments Act of 1972. Complaints or concerns related to alleged discrimination may be directed to the Institutional Equity and Compliance Director, Title IX Coordinator or Equal Opportunity Coordinator, Wichita State University, 1845 Fairmount, Wichita KS 67260-0138; telephone (316) 978-3187.

TITLE IX STATEMENT | Wichita State University ("WSU") does not discriminate on the basis of sex in its education programs, activities, admissions and employment. Any person may report sex discrimination, including sexual harassment (whether or not the person reporting is the person alleged to be affected by conduct that could constitute sex discrimination or sexual harassment). Reports can be provided in person, by mail, by telephone, by email, using the contact information listed for the Title IX Coordinator, or by any other mean, that results in the Title IX Coordinator receiving the person's verbal or written report. Such a report may be made at any time (including during non-business hours) by using the telephone number, electronic mail address, or by mail to the office address listed for the Title IX Coordinator: Lucretia Taylor, Title IX Coordinator Lindquist Hall 208 1845 Fairmount St. Wichita, KS 67260-0138 316-978-5177 oiec@wichita.edu

ANNUAL SECURITY & FIRE REPORT | Wichita State University is committed to assisting all members of the Wichita State University community in providing for their own safety and security. The 2023 Annual Security and Fire Safety Report is now available at wichita.edu/annualsfsreport. The report, which is accessible either at the website or in printed form, contains information regarding campus security and personal safety including topics such as: crime prevention, fire safety, university police law enforcement authority, crime reporting policies, disciplinary procedures and other matters of importance related to security and safety on campus. The annual report also contains information about crime statistics for the three previous calendar years concerning reported crimes that occurred on the Main Campus, Downtown/Old Town, WSU South, WSU West, WSU Haysville, and WSU National Center for Aviation Training (NCAT); in certain off-campus buildings or property owned or controlled by Wichita State University; and on public property within or immediately adjacent to and accessible from the Main Campus, Downtown/Old Town, WSU South, WSU West, WSU Haysville, and WSU National Center for Aviation Training (NCAT). If you would like to receive a printed version of the 2023 Annual Security and Fire Safety Report, please stop by the University Police Department (located south of Wilkins Football Stadium) to request a free copy. You may also request a free copy be mailed to you by calling the University Police Department at 316-978-3450.





AS KANSAS' ONLY RESEARCH UNIVERSITY IN AN URBAN SETTING,

WICHITA STATE OFFERS EXPERIENCES OTHERS CAN'T. By combining a traditional college atmosphere with the endless possibilities of the state's largest city, Wichita State is the only school in Kansas that provides an educational experience that goes beyond the limits of a typical college town.

WICHITA IS NOT YOUR TYPICAL COLLEGE TOWN.

As the medical, communications, financial and entertainment hub of Kansas, Wichita can make living in a run-of-the-mill college town seem a little lacking. From huge annual festivals and serene nature preserves to world-class dining and a thriving arts community, Wichita has it all. Add in practically endless opportunities for on-the-job experience as well as easy access to industry experts, and Wichita is a virtual utopia for the aspiring college student.

When Wichita State opened its doors in 1895, students rode horses to class, telegraph machines were cutting-edge technology and Wichita had only been a city for roughly 25 years.

A LOT HAS CHANGED.

The past century has featured a remarkable evolution for Wichita State, one in which the school has grown from a small Christian college to a large state university – punctuated by two name changes and a few thousand more students.

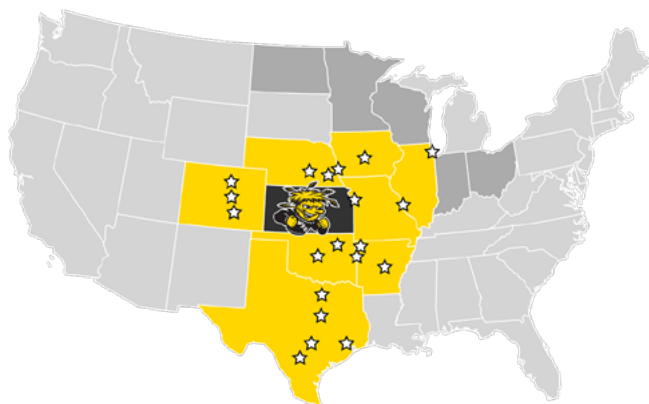
Together with the city of Wichita, Wichita State has built a thriving partnership, one that over the years has propelled each to new heights. It's a relationship that both supplies the lifeblood of a flourishing community and makes it possible to provide the most well-rounded education in the region.

THE CITY OF WICHITA OFFERS MANY ENTERTAINMENT OPPORTUNITIES.

Wichita's Old Town neighborhood is nestled in the heart of the city and features more than 100 restaurants, shops, clubs, theaters, galleries, museums and retail shops display art exhibits from local artists. First and Final Friday events are free and open to the public. INTRUST Bank Arena is the main entertainment venue downtown with performers like Twenty One Pilots, Taylor Swift, Cardi B, The Chainsmokers, Lil Wayne, Kevin Hart, Ariana Grande and Cirque du Soleil gracing the stage.



TUITION DISCOUNTS & SCHOLARSHIPS



SHOCKER CITY PARTNERSHIP

The Shocker City Partnership grants regular in-state tuition rates to students from specific metropolitan areas in Arkansas, Colorado, Illinois, Iowa, Missouri, Nebraska, Oklahoma and Texas. This is a savings of about \$40,000 over four years.

SHOCKER SELECT

Shocker Select offers a 33% discount on out-of-state tuition to residents of Arkansas, Colorado, Illinois, Iowa, Missouri, Nebraska, Oklahoma and Texas. Shocker Select students save about \$40,000 over four years.

MIDWEST STUDENT EXCHANGE PROGRAM (MSEP)

The Midwest Student Exchange Program offers 33% off out-of-state tuition to residents from Indiana, Minnesota, Missouri, Nebraska, North Dakota, Ohio and Wisconsin who meet the program's qualifications for major, test score and GPA. MSEP students save more than \$25,180 over four years.

LEGACY TUITION

If you are a nonresident who pays out-of-state tuition rates and your parent, stepparent, legal guardian, grandparent or step-grandparent graduated from Wichita State with an associate's, bachelor's, master's or doctoral degree, you are eligible to receive regular in-state tuition. Legacy students save about \$40,000 over four years.

- ☆ SHOCKER CITY PARTNERSHIP
- SHOCKER SELECT ELIGIBLE



SCHOLARSHIPS

Fully admitted high school seniors are automatically considered for four-year, renewable freshmen merit and academic scholarships. Awards range from \$4,000 to \$16,000 for Kansas residents and students receiving tuition discounts, while students paying full out-of-state tuition rates may receive \$6,000 to \$24,000. Awards are split evenly over four years and can be awarded based on GPA only, or a combination of GPA and ACT/SAT. Additionally admitted students are able to tap the power of ScholarshipUniverse, an exclusive tool that matches student profiles with Wichita State, regional and national scholarship opportunities. Visit wichita.edu/scholarshipuniverse to view the pathway to apply for a multitude of other scholarships collectively valued at millions of dollars.

FRESHMAN ADMISSION REQUIREMENTS

Students graduating from an accredited high school, younger than 21, **MUST**:

1. Have a cumulative 2.25 or higher GPA on a 4.0 scale; **OR**
2. Achieve an ACT composite of 21 or higher **OR** a minimum combined SAT composite of 1080 (test optional for admission);

AND, if applicable, achieve a 2.0 GPA on all college credit taken in high school

- ➔ Apply for admission at wichita.edu/apply.
- ➔ Pay the \$40 nonrefundable application fee.
- ➔ Take the ACT/SAT and submit your score to Wichita State. Wichita State's ACT code is 1472. Wichita State's SAT code is 6884.

For information about non-degree admission and related courses, visit WICHITA.EDU/GETADMITTED or WICHITA.EDU/BADGES.

➔ WICHITA.EDU/ADMISSIONS

 **#WeSupportU**
Counseling and Prevention Services

Here for Your Mental Wellness

CAPS is here to provide support for your mental health. Get your own suspenders t-shirt by purchasing one at the Shocker Store or by participating in #WSUWeSupportU suicide prevention training. To get trained visit wichita.edu/takethetraining.



Suicide Prevention 

Mental Wellness 

Substance Abuse Prevention 

Sexual Violence Prevention 



U **Ulrich**
Museum
of Art

Home of the Martin H. Bush Outdoor Sculpture Collection

Monday through Saturday | 11 a.m. to 5 p.m.
Free Admission | ulrich.wichita.edu
1845 Fairmount | Wichita State University



“SOMETIMES MY HUMAN DOESN'T WEAR PANTS AT HOME. IT'S A RIOT.”

—COLBY
adopted 06-18-11

A PERSON IS THE BEST THING TO HAPPEN TO A SHELTER PET

 **adopt**

theshelterpetproject.org



WICHITA STATE IS THE #1 TRANSFER DESTINATION IN KANSAS FOR 12 YEARS IN A ROW.

TRANSFER ADMISSION REQUIREMENTS

24 CREDIT HOURS OR MORE:
Minimum 2.0 cumulative GPA on previous college work

YOUNGER THAN 21 WITH FEWER THAN 24 CREDIT HOURS:
Have a minimum cumulative GPA of 2.0 on previous college work and fulfill one freshman admission requirement.

Once you're admitted, we'll automatically consider you for transfer scholarships ranging from \$2,000 to \$3,000 per year.

FOR COMPLETE ADMISSION REQUIREMENTS, VISIT WICHITA.EDU/GETADMITTED.

GET STARTED

1. Apply for admission at wichita.edu/apply.
2. Pay the \$40 nonrefundable application fee.
3. Submit official transcripts to the Office of Admissions.
4. Check how close you may be to a Wichita State degree by entering your transfer credits at wichita.edu/transfergateway.

TRANSFER SCHOLARSHIPS

\$6,000 (\$3,000 per year) for students with a **3.5 to 4.0** transfer GPA.
\$4,000 (\$2,000 per year) for students with a **3.25 to 3.49** transfer GPA.

Apply for admission by the priority consideration date – Feb. 1. Once you're admitted, create a profile through Wichita State's powerful and exclusive scholarship search platform, ScholarshipUniverse. To get started on the hunt for additional transfer scholarship opportunities, visit wichita.edu/scholarshipuniverse.

TRANSFER GATEWAY

SIMPLIFY YOUR TRANSFER PROCESS

Transferring can be a confusing process. We're here to help you see whether your credits may transfer and what steps you need to take.

WICHITA.EDU/TRANSFERGATEWAY

ADULT LEARNER ADMISSION REQUIREMENTS

WITH FEWER THAN 24 CREDIT HOURS:
Minimum cumulative GPA of 2.0 on previous college work, and have graduated from an accredited high school or have the required GED scores*

WITH NO TRANSFER WORK:
Have graduated from an accredited high school or meet the required GED scores*

*GED requirements vary depending on the year the test was taken.



Wichita State University has been recognized as a military-friendly institution because of its dedication to providing the guidance and resources to best serve the needs of our students. The Captain Riley Leroy Pitts Military and Veteran Student Center gives active service members, veterans and their families a place to feel at home and fulfill their unique educational needs.

➔ WICHITA.EDU/VETERANCENTER

ACADEMIC PROGRAMS



APPLIED STUDIES

Athletic Training
 Counseling
 Early Childhood Unified
 Elementary Education
 Exercise Science
 Middle Level Education
 Organizational Leadership
 and Learning
*Corporate and Organizational
 Wellness*
*Digital Transformation
 Education and Innovation*
*Emergency and Public Service
 Leadership*
Hospitality Management
 Physical Education
 Pre-K-12 Education
 Secondary Education
 Sport Management
 Teacher Apprentice Program™

BUSINESS

Accounting
 Business Administration
 Business Analytics
 Economics
 Economics - Real Estate
 Entrepreneurship
 Entrepreneurship - Real Estate
 Finance
 Finance - Real Estate
 Human Resource Management
 Information Technology and
 Management Information
 Systems
 International Business
 Management
 Management Science and Supply
 Chain Management
 Marketing
 Marketing - Real Estate

ENGINEERING

Aerospace Engineering
 Applied Engineering
Engineering Management
Facilities Management
Process Automation
*Sustainability and
 Environmental Engineering*
 Biomedical Engineering
 Computer Engineering
 Computer Science
 Computing
 Cybersecurity
 Data Science
 Electrical Engineering

Industrial Engineering
 Mechanical Engineering
 Product Design and Manufacturing
 Engineering

FINE ARTS

Art: Education
 Art: General Art/Art History
 Art: Studio
Applied Drawing
Ceramics Media
Community & Social Practice
Electronic Media
Painting
Photo Media
Print Media
Sculpture
 Graphic Design
 Media Arts
Acting for Digital Arts
Animation
Audio Production
Collaborative Design
Filmmaking
Game Design
 Music
Composition
Instrumental Performance
Jazz and Contemporary Media
Keyboard
Vocal Performance
 Music Education
 Performing Arts
Dance
Design and Technical Theatre
Music Theatre
Theatre Performance

HEALTH PROFESSIONS

Aging Studies
 Audiology
 Communication Sciences
 and Disorders
 Dental Hygiene
 Health Administration
 Health Management
 Health Science
 Medical Laboratory Sciences
 Nursing
 Physical Therapy
 Physician Associate

HONORS

Honors Baccalaureate

INNOVATION & DESIGN

Innovation Design

LIBERAL ARTS & SCIENCES

American Sign Language
 Anthropology
 Applied Linguistics
 Biological Sciences
Biological/Biomedical
Ecological/Environmental
Secondary Education
 Chemistry-Biochemistry
 Chemistry-Pre-Medicine
 Communication
Integrated Marketing Communication
Journalism and Media Production
Communication Studies
Open Emphasis
 Criminal Justice
 Economics
 English
Creative Writing
Language and Literature
 Field Majors
 Anthropology
 Biological Sciences-Biochemistry
 Chemistry-Business
 Classical Studies
 Communication
 Ethnic Studies
 Geography
 Global Studies
 International Studies
 Forensic Science
 General Studies
 Geology
 History
 International Studies
 Homeland Security
 Legal Education Accelerated Degree
 Mathematics
Data Science
Statistics
 Modern and Classical Languages
 and Literatures
French
Latin
Spanish
 Philosophy
 Physics
 Political Science
 Pre-professional Programs
Chiropractic
Dentistry
Law
Medicine
Optometry
Pharmacy
Podiatry
Veterinary Medicine
 Psychology
 Social Work
 Sociology
 Women's, Ethnicity and
 Intersectional Studies

SHOCKERS



The School of Digital Arts calls Shocker Studios home, giving students a 35,000-square-foot learning and application lab which maximizes collaboration among students, faculty and industry professionals.



WICHITA.EDU/APPLIEDSTUDIES

COLLEGE OF APPLIED STUDIES

Experience is everything in Wichita State's College of Applied Studies. Our priority is to maximize the potential of our students through skill-building and field placements that will set them apart in their future careers. With over 487 industry and educational partnerships, our students gain valuable real-world experience in education, counseling, exercise science, athletic training, organizational leadership, and sport management. Our graduates are empowered to make a positive impact on society.

Teacher education majors gain extensive hands-on experience in Kansas' largest and most diverse school district—Wichita USD 259, while our Teacher Apprentice Program allows paraeducators to earn their teacher licensure and bachelor's degree online while employed in schools across the State of Kansas. Our counseling students have access to the WISE clinic, where they provide counseling and play therapy services for the community. Students also have opportunities to engage in research in the state-of-the-art Human Performance Lab and internship placements with top sports organizations. With an emphasis on practical learning, professional development, and dedicated faculty, students will graduate with the skills and knowledge necessary to pursue their dream careers and make a difference in their chosen fields.



WICHITA.EDU/ENGINEERING

COLLEGE OF ENGINEERING

Top-notch education, nationally recognized programs, esteemed faculty and a long-standing relationship with industry distinguish Wichita State's College of Engineering from its peers. Wichita State offers majors in aerospace engineering, biomedical engineering, computer engineering, computer science, cybersecurity, electrical engineering, industrial engineering, manufacturing engineering and mechanical engineering and more.

Being located in the state's center of industry has its advantages, such as offering the largest engineering co-op and internship program in the state. In fact, more than 30% of the Wichita community's engineers are Wichita State graduates.

Wichita State is home to the National Institute for Aviation Research (NIAR), the country's largest aviation research and development institute; as well as many industry leaders including Airbus, Textron Aviation, Spirit AeroSystems and NetApp, who are putting state-of-the-art technology and real-world experiences well within reach of our students.

WICHITA.EDU/FINEARTS

COLLEGE OF FINE ARTS

As the state's only comprehensive college of fine arts, Wichita State brings the visual and performing arts together through the School of Art, Design and Creative Industries, School of Digital Arts, the School of Music, and School of Performing Arts. Wichita's strong art community, along with numerous on-campus gallery showings, concerts and performances, give our students limitless opportunities to learn, exhibit and perform. Wichita provides an environment for inspiration to flourish and access to the state's largest ready-made audience.

The college's exceptional faculty is recognized in art venues throughout the world. Voice and opera students have an opportunity to study with nationally renowned opera star Alan Held, while instrumental majors can learn from multiple faculty members who perform with the Wichita Symphony Orchestra.

The newest endeavor in the College of Fine Arts is the introduction of the Bachelor of Applied Arts degree in Media Arts. Students in this major can choose an emphasis area in acting for digital arts, filmmaking, animation, collaborative design, audio production or game design.

WICHITA.EDU/CHP

COLLEGE OF HEALTH PROFESSIONS

Located in the state's healthcare hub, Wichita State's College of Health Professions provides students with the skills, hands-on learning and professional connections essential to succeed in high-demand, high-paying health careers. With nationally accredited programs in nursing, physical therapy, dental hygiene, communication sciences and disorders, medical laboratory sciences, and physician associate, it's no surprise that if you go to any health care facility in the area, there's a Wichita State graduate nearby. Wichita State sets itself apart by being the only public university to offer an accelerated nursing program in the state, turning students into qualified nurses in less than two years. The college features health science degrees that prepare students to work across a variety of settings, the only physician associate program in the state, and the only Bachelor of Science program in dental hygiene at a Kansas Regents university. Wichita State's School of Nursing offers a guaranteed admission option for freshmen declaring a major in nursing. Wichita State's unique relationship with the largest healthcare community in south-central Kansas gives our students access to more real-world experience on and off campus.

WICHITA.EDU/LAS

FAIRMOUNT COLLEGE OF LIBERAL ARTS & SCIENCES

Fairmount College offers undergraduate majors in natural sciences and mathematics, social sciences, humanities, and professional training programs. Students who complete degrees in the liberal arts and sciences develop valuable skills applicable to any profession. By the time they graduate, students will possess proficiency in oral and written communication, analytical thinking and problem solving, interpersonal relationships, global understanding, and the ability to think logically and intelligently about social and ethical issues.



Photo by Brad Feinknopf



WICHITA.EDU/BUSINESS

W. FRANK BARTON SCHOOL OF BUSINESS

As Kansas' premier business school, our students have the advantage of boosting their LinkedIn profiles (not to mention their résumés) with the valuable experiences, tools and connections only found at Wichita State.

It's really no surprise that Barton School graduates stand out from the competition. Wichita State combines the widest range of accredited business degrees in the state with virtually unlimited learning opportunities.

Students may choose to pursue undergraduate degrees in business fields, including accounting, management, marketing, entrepreneurship, economics, finance, real estate, human resource management and information technology and management information systems. The Barton School of Business also offers one of the nation's best graduate programs that allows students to pursue their MBA, EMBA, Master of Science in Business Analytics and more.

The Barton School of Business is accredited through AACSB International in both business and accounting. Fewer than 1% of business schools worldwide hold this prestigious double-accreditation.

WICHITA.EDU/HONORS

DOROTHY & BILL COHEN HONORS COLLEGE

The Dorothy and Bill Cohen Honors College is a home for ambitious, self-aware and multifaceted students. We trust our students to take their honors education into their own hands. They enjoy flexible curricula, honors tracks and course foci. The Honors distinction is a supplement to, and enrichment of, one's undergraduate education. An honors education provides depth and breadth of learning for students of any major through rigorous, interdisciplinary coursework as well as service and leadership opportunities outside the classroom.

HONORS STUDENTS ENJOY...

- A community of high-achieving students
- Small, discussion-based classes and faculty mentorship
- Guidance and financial support for undergraduate research, study abroad, community service experiences and internships
- A local and international professional alumni network
- The Honors Lounge, accessible 24/7, with computers, study space, free printing and free coffee
- Priority enrollment for classes
- An education they design



WICHITA.EDU/ONESTOP

ONESTOP STUDENT SERVICES

OneStop Student Services offers 24/7 student support and service through live chat, phone and web ticketing in addition to self-service options. Students can receive immediate and personalized service regarding:

- Admissions
- Financial Aid
- Parking
- Records and Registration
- Student Accounts
- General Information

Students may choose an in-person option in room 112 Jardine Hall. Additionally, OneStop Student Services also does advising for all first-year students entering directly from high school, students who took a gap year and first-time in college international students. **Questions?** Contact OneStop at 316-978-3909 or email onestop@wichita.edu.



WICHITA.EDU/LIBRARY

WICHITA STATE UNIVERSITY LIBRARIES

The University Libraries is your research headquarters on campus, offering:

- Newly expanded and renovated E.K. and Kathlien Edmiston 24-Hour Study Room
- A research librarian assigned to assist students from each major
- 24-hour access to online research collections
- Reservable single and group study rooms
- Advanced technology such as 3D printing, virtual reality systems and video recording studio
- More than 2,000,000 books, journals and other physical materials for checkout

WICHITA.EDU/STUDENTSUCCESS

OFFICE OF STUDENT SUCCESS

The Office of Student Success helps students maximize their academic potential and reach their personal goals through a range of programs and services, regardless of personal background. Its goal is to help students develop skills and an individualized plan to graduate in a timely manner while engaging with our community of learners.

THE OFFICE OF STUDENT SUCCESS FOCUSES ON:

1. First-year transition programming
2. Academic success programs, including free one-on-one, drop-in and small group tutoring
3. Success coaching

The office aims to help students transition successfully to Wichita State, improve academic performance and achieve academic excellence, set and reach personal goals, and build confidence.



Over the many decades of Wichita State history, acts for the ages have taken the stage to entertain Shockers. Elvis, The Rolling Stones, Journey, Maroon 5, Fitz and the Tantrums, Dave Chapelle, Saint Motel and Tech N9ne and numerous more major artists have performed on campus.



Students involved in Greek Life at Wichita State pride themselves on academic achievement, leadership development, a commitment to bettering their communities, and one another through brotherhood and sisterhood. It's a tight-knit network of 25 Greek-letter organizations that have a variety of backgrounds, values, and missions.

WICHITA.EDU/ODI

OFFICE OF DIVERSITY & INCLUSION

The Office of Diversity and Inclusion (ODI) aims to cultivate and sustain an inclusive campus that strives for academic excellence by creating an environment that educates, empowers and mobilizes our students, the campus and the community. Our members view themselves as ambassadors for fundamental freedoms and respect the differences in others. Each semester, the office presents dynamic programs, which range from speakers and film showings to award ceremonies, cultural festivities and LGBTQA programming – each representing a small piece of the diversity displayed on the Wichita State campus.

WICHITA.EDU/RSC

RHATIGAN STUDENT CENTER

Located in the heart of the main campus, the **RHATIGAN STUDENT CENTER** is the social hub of student life at Wichita State University. Whether you're looking for a place to study, eat, hang out with friends, shop, relax or even get a quick haircut, the RSC is the place to be.

SHOCKER SPORTS GRILL & LANES is a great place to relax and have fun with your friends and family. Bowling, billiards, darts, video games, parties, tournaments, food and fun can all be found in the lower level of the RSC.

THE SHOCKER STORE is housed in the RSC and has the largest selection and lowest prices for Shocker merchandise in town. All the textbooks that students need are available for purchase or rent in the Shocker Store basement.

WICHITA.EDU/CAMPUSTRADITIONS

WICHITA STATE CAMPUS TRADITIONS

In 1928, **HIPPODROME** was a one-day event. Since then, Wichita State's longest-running tradition has dramatically grown to include a full week's worth of activities. It's an all-school event promoting Shocker pride through contests and live entertainment leading up to the main showcase: the Hippodrome skits. Groups of students perform original, no-holds-barred skits with the winners getting bragging rights and a trophy. One idea has continued to be the mainstay of Hippodrome: the display of student talent.

WELCOMEFEST. What better way to kick off each semester than with a university bash? During the first two weeks of



classes, there are a variety of events to welcome students back to school.

SHOCKTOBERFEST is an annual celebration of Shocker spirit and pride with a week of events culminating with the always popular Songfest. Student groups compete for points to be the winners of Shocktoberfest!

Each year, **HOMECOMING** is a full week of campus events, including the bonfire, Nearly Naked Run, pancake feed and the crowning of the homecoming king and queen.

FOR DIRECTIONS,
IN-DEPTH BUILDING INFORMATION AND
A LIST OF HOTELS NEAR WICHITA STATE, VISIT
[| WICHITA.EDU/MAP |](http://WICHITA.EDU/MAP)



WICHITA STATE AT MCCONNELL combines a quality education, flexible learning options, small class sizes, military-focused support and a convenient on-base location.

Students have access to a full-time educational specialist to help them with everything from registration and credit transfer to academic advising. Enjoy WSU's comprehensive, flexible military leave policy, plus, the MOU Military Inclusive Tuition Rate.

VISIT WICHITA.EDU/MCCONNELL FOR MORE INFORMATION.



Visit | WICHITA.EDU/TRANSIT | to learn more about Wichita State University's partnership with Wichita Transit, which allows students to ride across campus and throughout the city at no additional charge.

Visit | WICHITA.EDU/PARKING | to determine where to park on campus.

GOSHOCKERS.COM

SHOCKER ATHLETICS

The proud citizens of Shocker Nation are no strangers to excellence in athletics, and recent seasons gave them plenty of reasons to cheer! From AAC championships to NCAA tournament appearances, student athletes compete regularly in the national arena. Our NCAA teams include softball, baseball, basketball, volleyball, tennis, golf, track and field, cross country, bowling, cheer and dance.

Wichita State students receive FREE ADMISSION to all home NCAA athletic events!

Wichita State is a member of the American Athletic Conference (AAC) alongside Florida Atlantic University, Charlotte, Temple University, University of Alabama at Birmingham, Southern Methodist University, University of North Texas, University of Tulsa, University of Memphis, Tulane University, East Carolina University, Rice University, University of South Florida, and University of Texas at San Antonio.



INTERESTED IN PLAYING AN NCAA SPORT AT WICHITA STATE?
 Visit goshockers.com and fill out the **Recruitment Questionnaire** or email a coach.

3.406

OVERALL STUDENT-ATHLETE GPA

36

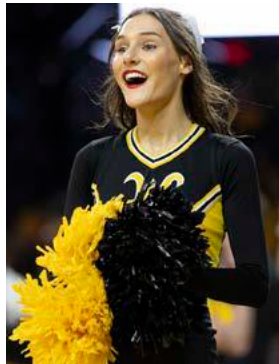
straight semesters-cumulative student athlete **GPA above 3.0**

45

student-athletes with a **4.0 GPA**

198

student-athletes on the **ATHLETIC DIRECTOR'S HONOR ROLL** | GPA of 3.0 or better |



WICHITA.EDU/BOWLING

SHOCKER BOWLING

Wichita State is home to the most accomplished collegiate bowling program in the nation with a record 23 men's and women's national championships. Since 1975, 65 Shocker bowlers have competed for the U.S. National Team, with a handful of alumni on the Professional Bowler's Association tour. Beginning in fall 2024, women's bowling will compete at the NCAA Division I level.



WICHITA.EDU/ROWING

SHOCKER ROWING

Shocker Rowing has been making waves in the Mid-West for almost fifty years. Our programs offer opportunities to all Shockers, whether it is on our competitive team or as a recreational rower. Whether new to the sport or an experienced youth rower, you have the chance to compete from the local to national level.

If you are looking for a true challenge and a program that is designed to help you excel, then see what we have to offer. We build champions. Additionally, Shocker Rowing proudly coordinates the university's Boats and Bikes venue, bringing outdoor health and fitness activities to the downtown river corridor through kayak, peddle boat, bike and scooter rentals.



WICHITA.EDU/ESPORTS

WICHITA STATE ESPORTS

Wichita State Esports is the official varsity esports program of WSU. We support student-athletes in competitive teams and staff volunteers through applied learning for both undergraduate and graduate level students.

Our program currently supports teams in the following titles: Call of Duty: Modern Warfare II, Overwatch 2, Rocket League, Super Smash Bros. Ultimate, and Valorant. We are a member of the National Association of Collegiate Esports and participate in intercollegiate competition through the NACE Starleague. You can find us on all socials @esportswsu!



WICHITA.EDU/COMPETITIVESPORTS

SPORT CLUBS

Sport Clubs offer students a way to train and/or compete at a high level. Sport Clubs are organized and run by students, though some do have coaches/instructors. Some clubs travel to compete in regional and national competitions, while others stay on campus and are instructional. Our Sports Clubs include men's and women's volleyball, men's and women's soccer, table tennis, waterski & wakeboard, barbell, shooting sports, disc golf, baseball, ultimate frisbee, cricket, bass fishing, tennis club, Wichita State Student Officials Association, taekwondo, gaming, golf, wrestling club, and basketball club.

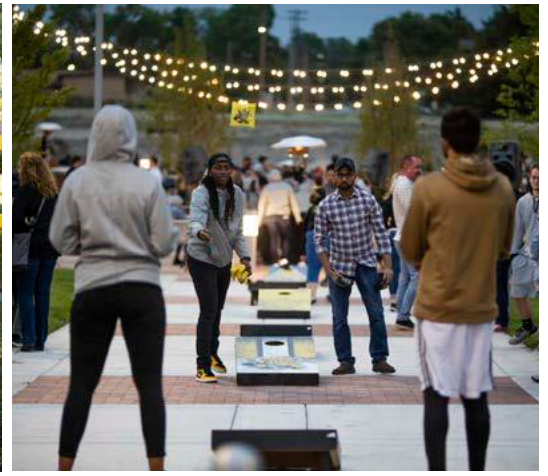




Pet-a-Pug is an annual finals tradition, giving students the opportunity to snuggle and cuddle rescue dogs who visit campus during the stressful last days of the semester.



Wichita State Campus Recreation's Heskett Center is the spot for those who like to jump sky-high off the diving board, but also has a separate 350,000 gallon pool for recreation, lap swimming and more.



The Shocker Career Accelerator's annual Career Connection Root Beer Kegger brings together more than 1,200 students, more than 60 employers and delicious, locally-brewed root beer.



New on campus are a dozen Starship Food Delivery Robots, bringing Starbucks, Panda Express, Chick-Fil-A, Tu Taco and Freddy's all over the 330-acre campus.





Shocker Hall →



The Flats Lobby →



GroundHouse →



Bubble Soccer →



F45 Exercise Class →



"Shockers" Sculpture →

ULRICH.WICHITA.EDU

ULRICH MUSEUM OF ART

The **ULRICH MUSEUM OF ART** at Wichita State University connects viewers with artists and artworks that reflect our world today. Located in McKnight Art Center, the museum holds a permanent collection of more than 6,700 works. Its Martin H. Bush Outdoor Sculpture Collection includes 76 works spread across the 330-acre WSU campus. Students may explore the galleries Tuesday through Friday from 11 a.m.-5 p.m. and on weekends from 1 p.m.-5 p.m.

WICHITA.EDU/HOUSING HOUSING & RESIDENCE LIFE

Living on campus means quick access to classes, action-packed athletics, campus activities and hundreds of new friends all right at your doorstep.

SHOCKER HALL is located in the heart of main campus and offers both shared and private suites, an attached dining hall and the GroundHouse coffee shop. Shocker Hall houses first-year students and is home to the Cohen Honors College and Living Learning Communities (LLCs).

THE FLATS are located on the east side of campus and offers fully furnished apartments with a full kitchen and washer/dryer in each unit. The Flats are available to upperclassmen students.

THE SUITES is a 220-bed residence hall, located right next to the Flats Apartments. The building features primarily two-bedroom suites, including a kitchenette, bathroom and washer/dryer in each unit. The Suites are available to first-year students only.

Housing and Residence Life is committed to promoting the total university experience by providing a supportive living environment designed to foster academic success, personal growth and civic responsibility.

LIVING LEARNING COMMUNITIES offer first-year students with similar academic interests the opportunity to live together on a floor in Shocker Hall. These residents enjoy a built-in support system, mentoring, leadership opportunities and an enhanced sense of community. Students can apply to be in an LLC through the housing application process.

QUESTIONS? Visit our website at wichita.edu/housing or contact us at housing.wsu@wichita.edu or (316) 978-3693.

WICHITA.EDU/CAMPUSREC CAMPUS RECREATION

At Wichita State, Campus Recreation is the primary destination for fitness, recreation, special events and social activities, including:

- Aquatics
- Recreation & Wellness
- Massage Therapy
- Outdoor Adventure Program
- Esports
- Sport Clubs
- Boats & Bikes at River Vista
- Shocker Fit & F45
- Intramural Sports
- Shocker Rowing

Want even more recreation? Fee-paying Wichita State students enjoy single adult memberships to all 10 Wichita-area YMCAs. To get started, bring your Shocker ID to any YMCA, including the Steve Clark YMCA on campus.

WICHITA.EDU/NSE NATIONAL STUDENT EXCHANGE

National Student Exchange (NSE) lets you swap Wichita State's campus with almost 200 universities across the United States and Canada while paying Wichita State tuition and earning credit toward your degree. Shockers can study at their chosen university for a semester or full academic year.

BENEFITS OF NATIONAL STUDENT EXCHANGE:

- Live in different geographic and cultural settings.
- Broaden your educational perspective.
- Investigate graduate schools.
- Pursue research, field study & internship opportunities.
- Experience personal growth and independence.
- Prepare yourself to live and work in a culturally diverse society.



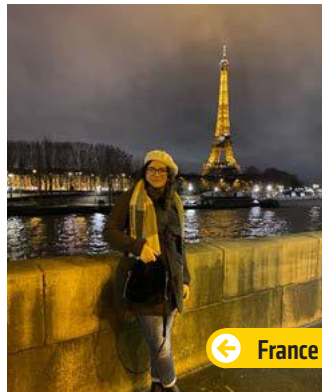
Spain



Austria



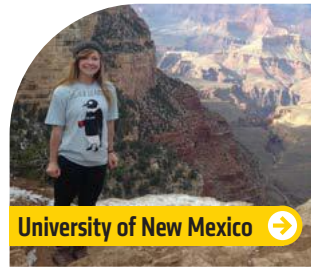
South Korea



France



Italy



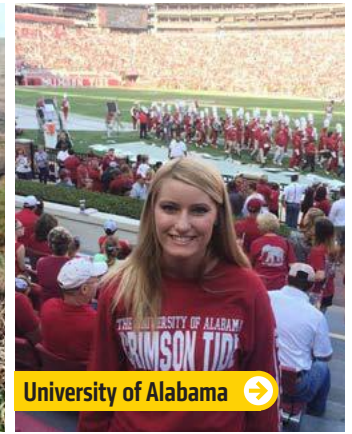
University of New Mexico



Bridgewater State University



Sonoma State



University of Alabama



Northern Arizona University

WICHITA.EDU/STUDYABROAD OPPORTUNITIES TO STUDY ABROAD

Through Wichita State's numerous study abroad programs, Shockers can swap campuses, cultures and countries while earning credit toward a Wichita State degree. Many opportunities to study, intern or volunteer abroad are available around the world. Program length ranges from one week to one year. Through Wichita State exchange partnerships, studying abroad is not as expensive as you might think, and scholarships are available.

JUST A FEW OF THE MANY BENEFITS OF STUDYING ABROAD:

- Explore other cultures and see new places.
- Learn another language.
- Make friends from all over the world.
- Develop a global resume and give yourself a competitive edge in the job market.



WICHITA.EDU/CAREERS WICHITA STATE SHOCKER CAREER ACCELERATOR

Wichita State's Shocker Career Accelerator connects Shockers to real-world experiences before graduation through applied learning. By participating in applied learning experiences, Wichita State students can have it all: get career-ready, college credit, professional connections, a paycheck, and – in many cases – a job offer, putting them ahead of the competition.

NAME Ebony Moore
MAJOR Business Management and Human Resources Management
CO-OP Deloitte

Nestled within the vibrant campus of Wichita State University is a hub of innovation and experiential learning known as the Deloitte Smart Factory. This state-of-the-art facility, offers Wichita State students unparalleled access to unique applied learning opportunities, bridging the gap between academia and real-world business challenges.

Ebony joined Deloitte as an Experience Design Intern, eager to make a difference in the company and gain practical experience in her field. Despite being new to the organization, Ebony's talent and drive quickly caught the attention of her superiors, who recognized her potential and entrusted her with prominent projects. Ebony's enthusiasm was evident when she said, "Despite still being new at Deloitte, I am given prominent projects which excite me for my future with the company."

As an Experience Design Intern, Ebony's primary responsibilities are to gather post-experience surveys from clients. This crucial task allows her to provide valuable insights to the leadership team regarding clients' suggestions for improvements and recommendations for The Smart Factory experiences. Ebony's meticulous approach and attention to detail ensured that the feedback was accurately collected and analyzed.

In addition to her survey-gathering role, Ebony implemented the creation of client workbooks, which serve as a comprehensive guide for clients to navigate their experiences at The Smart Factory. Ebony also coordinates shuttle services, monitors registration, and oversees check-ins for tours.

Ebony is poised to achieve great heights in her professional journey and after her time with Deloitte, moved on to a summer 2023 internship with Apple on the west coast and was offered a fall internship with Tesla.

PROMINENT EMPLOYER PARTNERS

Wichita State students earned approximately **\$30.6 MILLION** in **8,219 applied learning and on-campus positions** while working for over **520 employers**. Below are some of the businesses and organizations that have opened their doors to Shocker students:

- ➔ Adams Brown
- ➔ Airbus
- ➔ ATF (Bureau of Alcohol, Tobacco, Firearms, & Explosives)
- ➔ Black & Veatch
- ➔ Bombardier Learjet Aerospace
- ➔ Boys and Girls Club
- ➔ Burns & McDonnell
- ➔ Cargill
- ➔ Case New Holland
- ➔ Deloitte
- ➔ Disney
- ➔ Drug Enforcement Administration (DEA)
- ➔ Ernst & Young
- ➔ Fidelity Bank
- ➔ Foley Equipment
- ➔ Goldman Sachs
- ➔ High Touch Technologies
- ➔ Honeywell NSC (National Security Campus)
- ➔ Integra Technologies
- ➔ INTRUST Bank Arena
- ➔ KAKE, KSN & KWCH TV
- ➔ Koch Industries
- ➔ McCurdy Auction
- ➔ Muscular Dystrophy Association
- ➔ NASA
- ➔ NetApp
- ➔ Pfizer
- ➔ Rainbows United
- ➔ Rudd Foundation
- ➔ Spirit AeroSystems
- ➔ Textron Aviation
- ➔ The Boeing Company
- ➔ Toyota
- ➔ U.S. Marshals
- ➔ Visit Wichita
- ➔ Wichita Brewing Company
- ➔ Wichita Police Department
- ➔ Wichita Public Schools

WSUINNOVATIONCAMPUS.ORG

WICHITA STATE INNOVATION CAMPUS

In 2012, Wichita State launched a master planning process to engage the community in the task of imagining a campus aligned with the dynamic, powerful future envisioned in WSU's ambitious mission and vision statements. Within five years, that work was well established with the amazing transformation of a 120-acre section of the campus that once housed the Braeburn Golf Course.

Wichita State University's Innovation Campus is an interconnected community of partnership buildings, where organizations establish operations and reap the rewards

of the university's vast resources. Laboratories give students access to real-world applications and the training needed to effortlessly assimilate into the workforce, and a community makerspace gives both students and non-students access to the technology and services that helps facilitate product development. It is also home to new residential, retail and services developments to improve the quality of student life and draw the community onto campus -- and there is much more to come! Wichita State's Innovation Campus is a mixed-use area that provides everyone with a place to live, learn, work and play.

Envision being part of a university where innovation, creativity, entrepreneurship & technology are building the future.

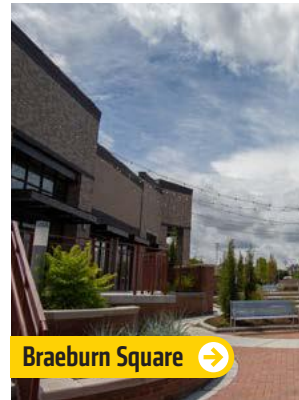
THAT IS WICHITA STATE.



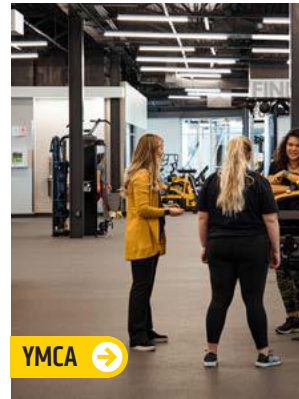
Community-Driven Art →



Shocker Store →



Braeburn Square →



YMCA →



NetApp →



The Flats at Wichita State →



Spirit Aerosystems →



Sesame Mediterranean Kitchen →



Woolsey Hall →

GOCREATE.COM
GOCREATE

GoCreate, a Koch Collaborative, is a makerspace that provides people of all ages and skill levels access to sophisticated equipment, shared workspaces, expert advice and a supportive community of creative people to explore individual ideas for innovation.

GoCreate has studios for a wide variety of projects, including:

- ➔ 3-D Print and Scan
- ➔ Design
- ➔ Electronics
- ➔ Finishing
- ➔ Metals and Welding
- ➔ Textiles
- ➔ Wood and Foam

"Our presence on the Innovation Campus will help us enhance products and business processes to create value for our customers. The campus provides an environment that fosters the transition of innovative ideas into real-world uses and values for the company."

JOHN O'LEARY

Vice President
 Airbus Americas Engineering



GoCreate ➔



Food Truck Plaza ➔



Pizza Hut Museum ➔



Crime Gun Intelligence Center of Excellence ➔



WuShock Statue ➔



Social Tap Drinkery ➔

WICHITA.EDU/RESOURCES**WICHITA STATE
STUDENT RESOURCES**

The mission of **STUDENT HEALTH SERVICES (SHS)** is to assist students in maintaining a state of optimum physical and mental wellness. SHS provides medical care and treatment for ill and injured students. Services also include health and wellness education, nutrition counseling, and limited pharmacy services. Call **(316) 978-3620** for more information.

Wichita State's **COUNSELING AND PSYCHOLOGICAL SERVICES** provides support for students' for personal, learning and mental health issues. Professional counseling is available to all Wichita State students, faculty and staff. The center also works to provide education to prevent, identify and treat our community in regard to alcohol/substance abuse, sexual assault and violence, and suicide. Visit **WICHITA.EDU/CAPS** or call **316-978-4792** for more information.

ONE SHOCKER FAMILY is committed to being here for Shocker parents and families throughout your student's college journey. At Wichita State, we want parents and family to feel engaged and connected. To learn more about this resource for students and parents, visit **WICHITA.EDU/SHOCKERFAMILY**.

The **STUDENT ENGAGEMENT, ADVOCACY & LEADERSHIP (SEAL)** offers more than 200 student organizations such as Greek life, leadership development programs, and community service and civic engagements.

Wichita State's **WRITING CENTER** offers free tutoring to students at every level and in all majors. Tutors can assist with all aspects of writing including brainstorming, organization, style and revision.

The **CENTER FOR EXCELLENCE IN ORAL COMMUNICATION** (Public Speaking Lab) offers assistance in reducing the fear of public speaking as well as assistance with writing and presenting a speech.

Free assistance is also available in Wichita State's **MATH LAB**, which is open Monday through Friday with tutoring available on a drop-in basis.

Subject-specific (one-on-one and small group) tutoring, **SUPPLEMENTAL INSTRUCTION**, and departmental tutoring ensure that students have the resources to succeed in the classroom. For tutoring resources or to request a tutor, go to **WICHITA.EDU/TUTORING**.

The **OFFICE OF STUDENT ACCOMMODATIONS & TESTING** provides students with learning, mental or physical disabilities an equal opportunity to attain their academic and personal goals to the fullest of their abilities. Visit **wichita.edu/accommodations** for more information.

A \$17 million renovation of Clinton Hall will transform it into the **SHOCKER SUCCESS CENTER** with new entrances, light and airy interior spaces, and updated features throughout to create a warm, welcoming and highly functional space.

FOUNDATION.WICHITA.EDU**WICHITA STATE
SUPPORTERS**

Established in 1913, the **WICHITA STATE UNIVERSITY ALUMNI ASSOCIATION** coalesced around a dedicated group of alumni led by Harry Shuler for the purpose of creating a Shocker community of university supporters. In tandem, the **WICHITA STATE UNIVERSITY FOUNDATION**, which was founded in 1965, has championed private support to advance the mission and vision of the university. With a combined 176 years of experience, the two organizations united in 2022 to create a single alumni-and-donor serving organization, **WICHITA STATE UNIVERSITY FOUNDATION AND ALUMNI ENGAGEMENT**, optimizing support of Shocker Nation through combined philanthropy and alumni engagement efforts.

WICHITA.EDU/ONLINE**WICHITA STATE
ONLINE LEARNING**

Whether you're seeking a graduate degree, returning to school, planning classes around a busy schedule or looking to get a Wichita State degree without relocating, Wichita State Online can help you meet your unique educational goals.

With flexible online programs, students can:

- Complete a bachelor's degree or start a master's degree.
- Pursue a degree at their own pace, full-time or part-time.
- Transfer credits from other accredited programs.
- Gain the recognition that comes with a degree.
- Pay some of the lowest tuition in the state of Kansas.

The Office of Online Learning has recently joined forces with the Office of Adult Learning. As the new Office of Online and Adult Learning (OAL), we look forward to serving our students at a greater capacity.





Shocker Sound Machine is a high-octane, explosive, and adrenaline-inducing marching ensemble that performs at Shocker Basketball Games, regional and local events, and special occasions.

MEET WuShock

- Intimidating scowl to frighten rivals
- The heart of Shocker Nation
- Muscular legs to support Shocker pride
- Big shoes to stomp rival universities
- Unruly stalks of wheat for hair
- Eyes display the focused gaze of a true competitor
- Strong arms to raise school spirit

Legend has it that the name “Shockers” first appeared in 1904 on a poster advertising a football game between Wichita State, then Fairmount College, and the Chilocco Indians. The team’s manager chose the name because many of the players earned money during the off season harvesting, or shocking, wheat.

When it came time to bring the name to life, students created WuShock – a big, bad, musclebound bundle of wheat – whose name was derived from a period in time when the university was simply known as Wichita University, or WU. It’s not difficult to spot Wu at athletic, cultural and university events bolstering school spirit.

WU THROUGH THE AGES



FOLLOW WU
@wu_shock



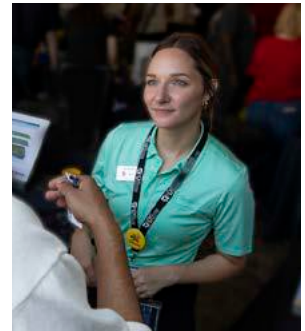
Corbin Education Center, home to the **College of Applied Studies**, is a masterpiece of modern design by **Frank Lloyd Wright**.



Our students hold more than **8,000 internships and on-campus jobs** earning more than **\$30 million** annually.

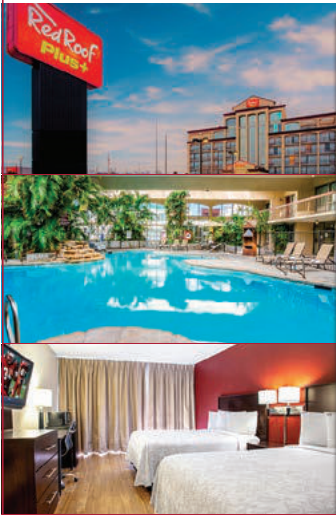


Wichita's thriving **Old Town and Downtown districts** are student favorites. Shockers can get away from it all to see a movie, visit a museum, have dinner, go to a concert or shop at unique local boutiques.



RedRoof Plus+

Wichita-East
7335 E. Kellogg Dr
Wichita, KS 67207



**FAMILY-FRIENDLY COMFORT
AT A REASONABLE PRICE**

- + Hot Breakfast
- + Tropical Indoor Swimming Pool
- + Redi-Clean
- + High-Speed Wi-Fi throughout
- + Pets Stay Free
- + Over 100 HD Cable Channels including HBO
- + 100% Smoke-free
- + 5.2 miles to Wichita State
- + 5.5 miles to downtown Wichita
- + 11 miles to Wichita Dwight D. Eisenhower National Airport (ICT)

**MENTION *WuSHOCK*
FOR SPECIAL RATE**

redroof.com + 316-685-1281 + guestservices@rrpluswichita.com

HOMewood SUITES by Hilton™ @ The Waterfront

Lakeside Views and Beautiful Location in NE Wichita

Enjoy our Lakeside Landing patio with sport court, putting green, grills, and heated gazebo, indoor pool and spa, in-suite kitchen with full-size appliances, our freshly prepared daily breakfast buffet, complimentary Wednesday evening social, Wi-Fi, and convenient parking.



1550 North Waterfront Parkway
Wichita, Kansas 67206, USA

Welcome Home!
+1 316-260-8844

SUPPORT WSU
Become a business sponsor
in our Visitors Guide!

Reserve your spot for next year.
sales@makeitmomentous.com

Wichita State University VISITOR GUIDE on the go!



CampusVisitorGuides.com/WSU

GET HELPFUL INFO ANYTIME, ANYWHERE!

You can find all of the editorial content in the Visitor Guide on our responsive web edition, optimized for all your digital devices. Just scan the code to discover more!

Brought to you by MOMENTOUS CAMPUS MEDIA
800-807-1013 | info@makeitmomentous.com

**We care about
your smile and
your health!**

15% discount for first responders, veterans, law enforcement, active duty military when they mention their job.

QUALITY DENTAL CARE FOR PATIENTS OF ALL AGES
Cleanings • Exams • X-Rays • Fillings • Teeth Whitening
Night & Sports Guards • Restorative Dentistry

DENTALCORNER.NET

2046 N. Oliver St • Wichita, KS 67208 • 316.681.2425

CONNECT WITH WICHITA STATE UNIVERSITY

Keeping up with events, scholarship opportunities and all of the fun happening at Wichita State just got easier.

ADMISSIONS

wichita.edu/admissions

PHONE 📞 (316) 978-3085

EMAIL 📧 admissions@wichita.edu

ON CAMPUS 📍 Marcus Welcome Center

PUBLICATIONS 📄 wichita.edu/publications

TWITTER 🐦 @wheatweet, @shockerexp

INSTAGRAM 📷 @wichitastateadmissions

TIKTOK 📺 @wichitastateu

FACEBOOK 📘 Wichita State Admissions

YOUTUBE 📺 Wichita State Admissions

BLOG 📝 wichita.edu/blog

ZEEMEE 📺 wichita.edu/zeemee

WUBOT (24/7 CHATBOT) 🤖 wichita.edu/admissions/undergraduate

VIRTUAL TOUR 📺 wichita.edu/campustour

CAMPUS VISIT 📅 Schedule a campus visit and see first hand all that Wichita State has to offer. Visit wichita.edu/visit or call (316) 978-3085 and we'll plan a day just for you.

ONESTOP

wichita.edu/onestop

PHONE 📞 1-855-978-1787

ON CAMPUS 📍 112 Jardine Hall

FINANCIAL AID & SCHOLARSHIPS

wichita.edu/financialaid

PHONE 📞 (316) 978-3430

EMAIL 📧 finaid@wichita.edu

ON CAMPUS 📍 203 Jardine Hall

FAFSA 📄 studentaid.gov

SCHOLARSHIPS 📄 wichita.edu/scholarshipuniverse

HOUSING & RESIDENCE LIFE

wichita.edu/housing

PHONE 📞 (316) 978-3693

EMAIL 📧 housing.wsu@wichita.edu

ON CAMPUS 📍 Shocker Hall
2020 Perimeter Rd

STUDENT SUCCESS & ORIENTATION

wichita.edu/orientation

PHONE 📞 (316) 978-5420

EMAIL 📧 orientation@wichita.edu

ON CAMPUS 📍 115 Neff Hall

REGISTRAR

wichita.edu/registrar

PHONE 📞 (316) 978-3055

EMAIL 📧 registrar@wichita.edu

ON CAMPUS 📍 102 & 117 Jardine Hall

GRADUATE SCHOOL

wichita.edu/gradschool

PHONE 📞 (316) 978-3095

EMAIL 📧 wsugradschool@wichita.edu

ON CAMPUS 📍 107 Jardine Hall

INTERNATIONAL ADMISSIONS

wichita.edu/international

PHONE 📞 (316) 978-3232

EMAIL 📧 international@wichita.edu

ON CAMPUS 📍 Garvey International Center










CANDLEWOOD
SUITES

AN IHG® HOTEL

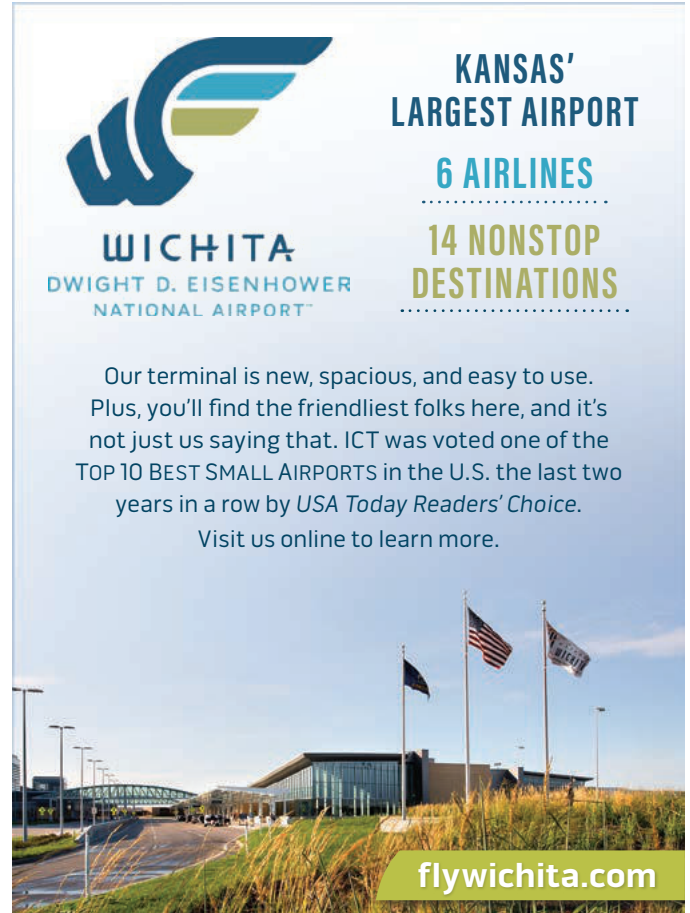
WICHITA EAST
5211 E. KELLOGG


- Fully-equipped Kitchens in all Suites
- Free WiFi and Cable
- Fitness Center
- Game Room
- Complimentary Laundry

*Like what you see?
Book with us today.*

316-677-8220

candlewoodsuites.com/wichitaks





WICHITA
DWIGHT D. EISENHOWER
NATIONAL AIRPORT™

KANSAS' LARGEST AIRPORT

6 AIRLINES

14 NONSTOP DESTINATIONS

Our terminal is new, spacious, and easy to use. Plus, you'll find the friendliest folks here, and it's not just us saying that. ICT was voted one of the TOP 10 BEST SMALL AIRPORTS in the U.S. the last two years in a row by *USA Today Readers' Choice*. Visit us online to learn more.

flywichita.com



**Deliciously Affordable 3-Course Meals
Perfect for Families and Groups
Banquet and Catering Services**



Bring in or display this ad on your phone for a FREE Sicilian Garlic Cheese Bread!

With the purchase of an adult entrée. Not valid with other offers. One per table. Limited time offer. Not valid on holidays. Expires 5/1/25.

**1421 Waterfront Parkway • Wichita
316.633.4365 • osf.com**



Banking Made Easy With

- **24/7 Online Banking/Loan Payments**
- **Easy Online Loan Applications**
- **Mobile Check Deposit**
- **Mobile Banking App**
- **No Fee Checking Accounts**
- **55,000 ATM Network**
- **2 Convenient Locations**
- **RSC - 21st and Oliver**



Call Us At: (316)867-4700

E-mail Us At: memserv@campuscu.org



RSC 21st
1845 FAIRMOUNT, STE 106 4960 E. 21st N.
WICHITA, KS 67260-0065 WICHITA, KS 67208

Careers start here.



National Center for Aviation Training
4004 N. Webb Road | 316.677.9400

City Center | 301 S. Grove | 316.677.9400

WSU Old Town | 213 N. Mead | 316.677.9400

WSU South | 3821 E. Harry | 316.677.9400

National Institute for Culinary and Hospitality Education
124 S. Broadway | 316.677.9400

www.WSUTECH.edu

